

# ScotBilt Homes, Inc. High Value Standard Features

## EXTERIOR

- \*\*4/12 Roof Pitch - (28 wide only)
- \*\* Vinyl Lap siding
- \*\*Fomecor exterior wall sheathing
- 20 Year hand-nailed shingles
- 9 over 9 white windows
- Raised panel shutters - F & DS
- 4 Large windows in Living/Dining Area (specific models)
- 6-panel front door w/storm
- 9-pane cottage rear door
- Sliding glass door (specific models)
- (2) deadbolt locks
- Exterior GFI recep
- Exterior water faucet
- Removable hitches
- Recessed Frame Headers - F & R
- Full size I-beam steel frame
- Porch light at all exterior doors
- Dry-ply shingle underlayment

## GENERAL CONSTRUCTION

- \*\*2x6 exterior wall studs 16" o.c.
- \*\*Zone III - hurricane Zone Construction
- \*\*8' tall 2x4 interior wall studs
- \*\*Tongue & groove plywood floors
- \*\*Total electric/200 amp service
- \*\*R11-13-21 insulation
- \*\*Overhead ducts
- \*\*Ridge vent ventilation system
- 2x6 floor joists 16" o.c.
- Truss-type roof rafters 16" o.c.
- Copper wiring throughout
- Brace for fans in L/R & BR's
- Smoke detectors-living area & BR's

## INTERIOR FEATURES

- \*\*Hand laid 12x12 block floor tiles
- \*\*Drywall wall panels - *no batten strips*
- \*\*4" crown molding - all rooms except closet & pantry
- \*\*Fluted door casing on both sides of all interior doors except closets & pantry on entry door side only
- \*\*4" Baseboard molding T/O
- \*\*Marble window sills
- \*\*Metal faucets throughout
- Deluxe 4" vertical blinds T/O except Kit. & Baths
- Plush nylon carpet
- Rebond carpet pad
- Tack strip carpet installation
- Embossed white interior doors
- Brushed nickel lever door handles
- Brushed nickel H/D door hinges

- Brushed nickel light fixtures
- Brushed nickel chandelier - D/R
- Finished closets w/coated wire shelving
- 8' Flat knock down ceilings

## KITCHEN FEATURES

- \*\*18' refrigerator w/icemaker
- \*\*Picture window over sink
- Dlx self-cleaning electric range w/ clock/timer
- S/L faucet and spray
- Deep acrylic sink
- Flourescent light (specific models)
- Dlx chandelier-in dining area

## CABINETS

- \*\*3-tier cabinet system
- \*\*Wood cabinet doors, cherry cabinet doors or white raised panel
- Hidden cabinet hinges
- Drawers over base cab doors
- Metal drawers w/side roller guides
- Glass cabinet doors (top tier)
- Large pantry with door - (specific models)
- White-lined cabinet interiors
- Center shelves
- Formica countertops & self edge
- Ceramic backsplash bath & kitchen

## MASTER BATH

- \*\*Fiberglass shower w/door
- Ceramic lav w/lever faucets
- Beveled edge mirror
- "Hollywood" vanity light
- Elongated ceramic commode
- Banjo lav countertop (specific models)

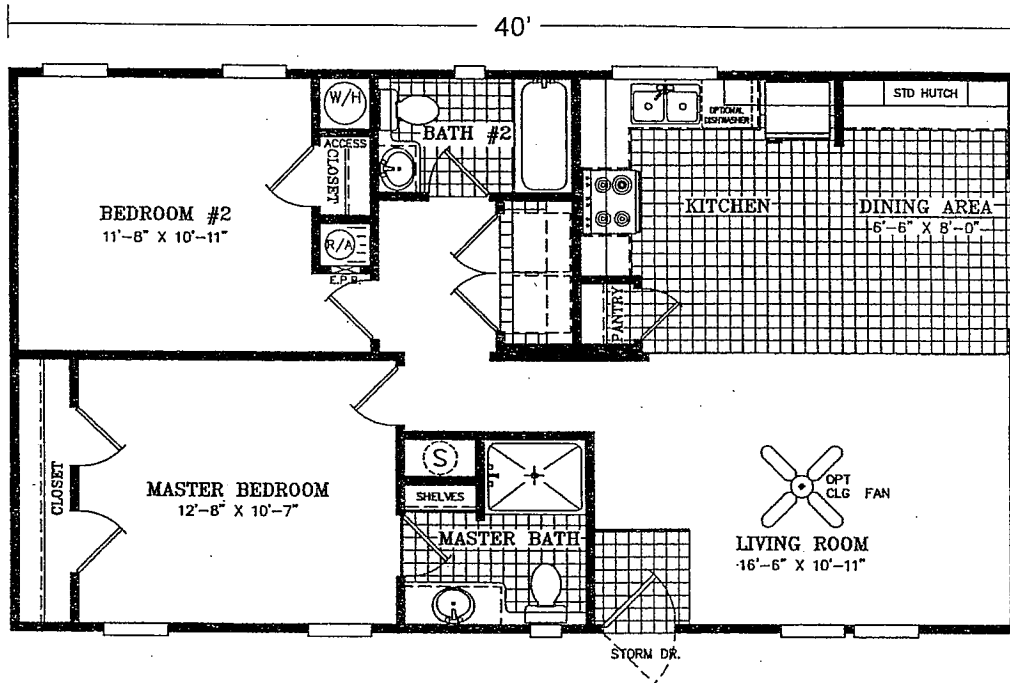
## GUEST BATH

- \*\*"54" fiberglass tub/shower
- Ceramic lav w/lever faucet
- Elongated ceramic commode
- Banjo lav countertop (specific models)

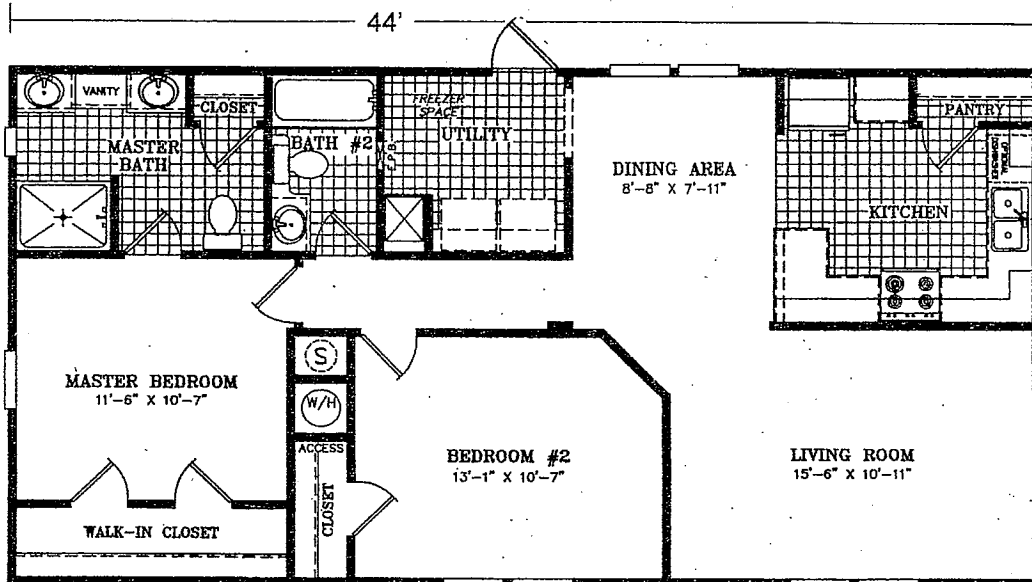
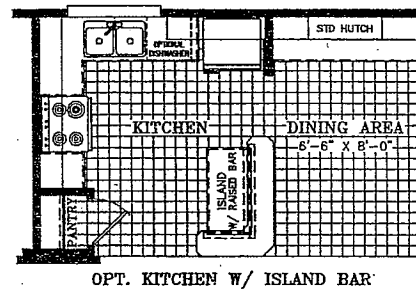
## UTILITY AREA

- 40 gallon electric water heater
- Washer/dryer cabinet
- Whole house water cut-off valve & cut off at commode, sink & lavs
- Plumbed for washer/wired for dryer
- Remember....only ScotBilt Homes have:

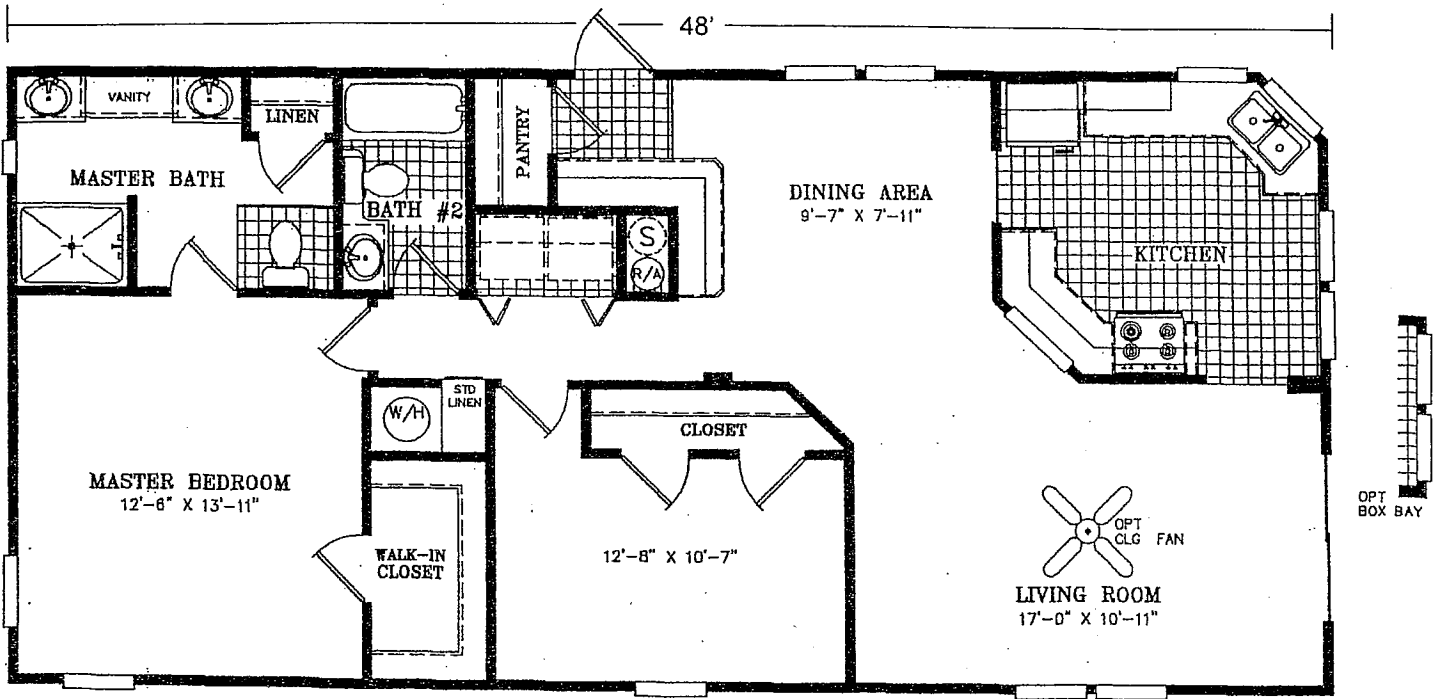
<ul style="list-style-type: none"><li><b>12</b> day service satisfaction</li><li><b>12</b> month HUD warranty</li><li><b>12</b> year structural warranty</li></ul>
--



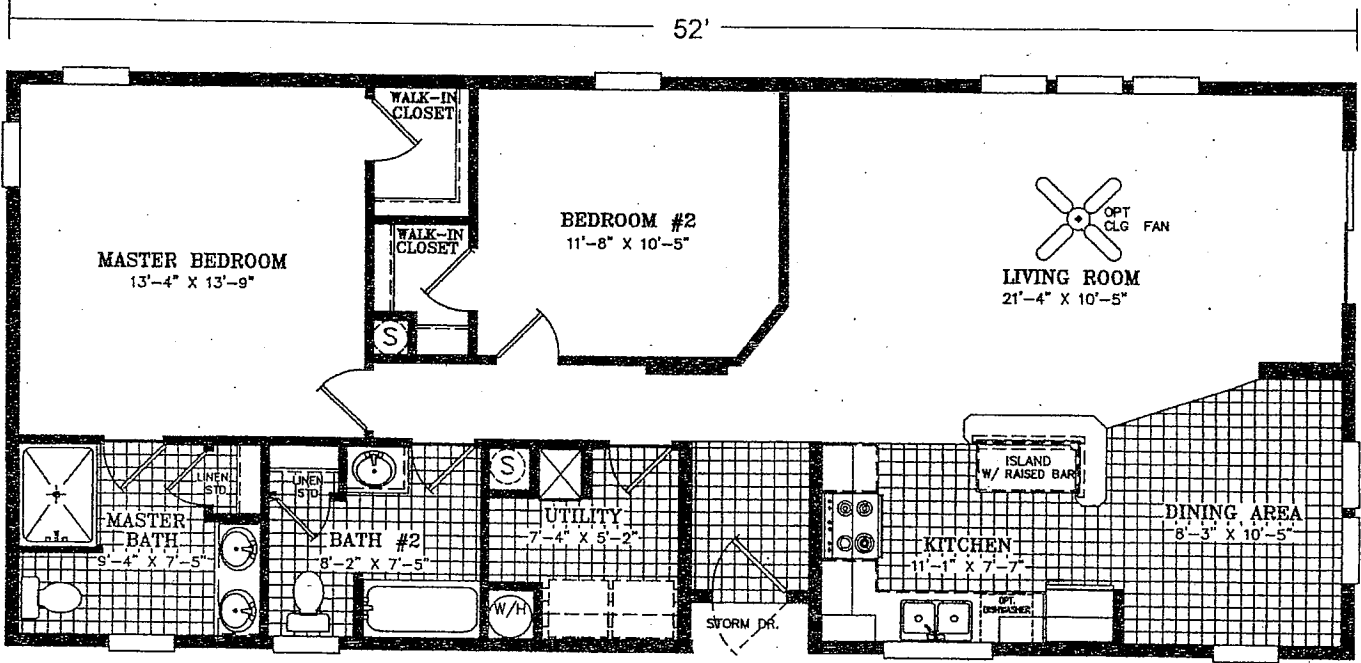
244012-CCL  
24 x 44  
2 Bedroom, 2 Bathroom



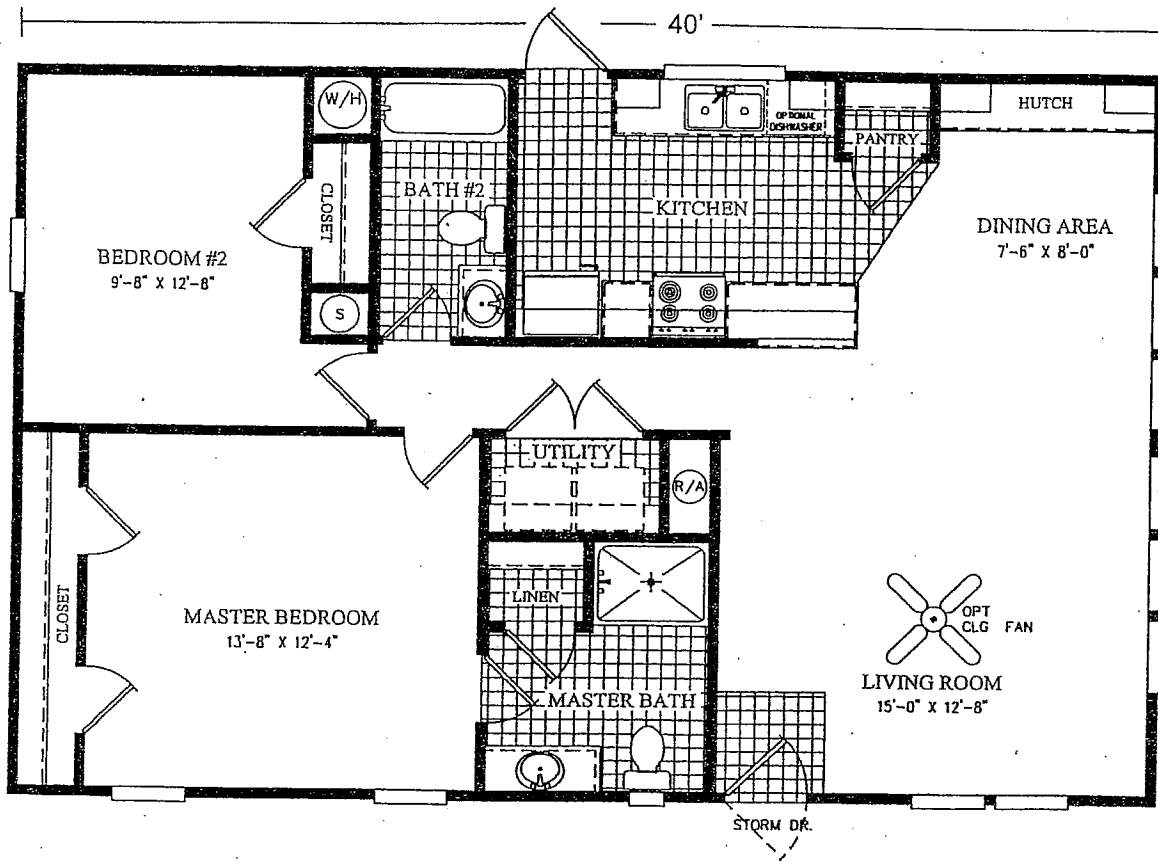
244412-CCL  
24 x 48  
2 Bedroom, 2 Bathroom



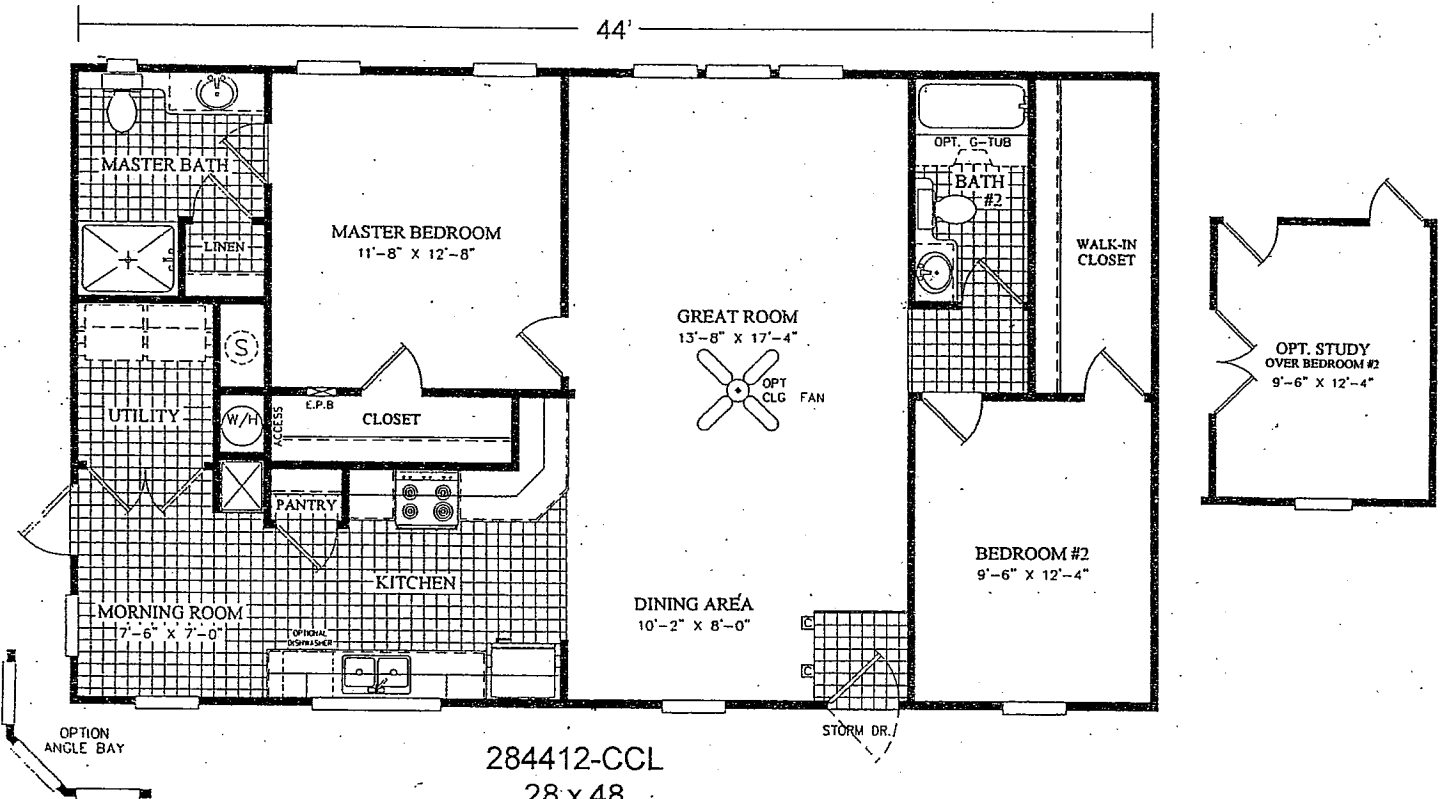
244812-CCL  
 24 x 52  
 2 Bedroom, 2 Bathroom



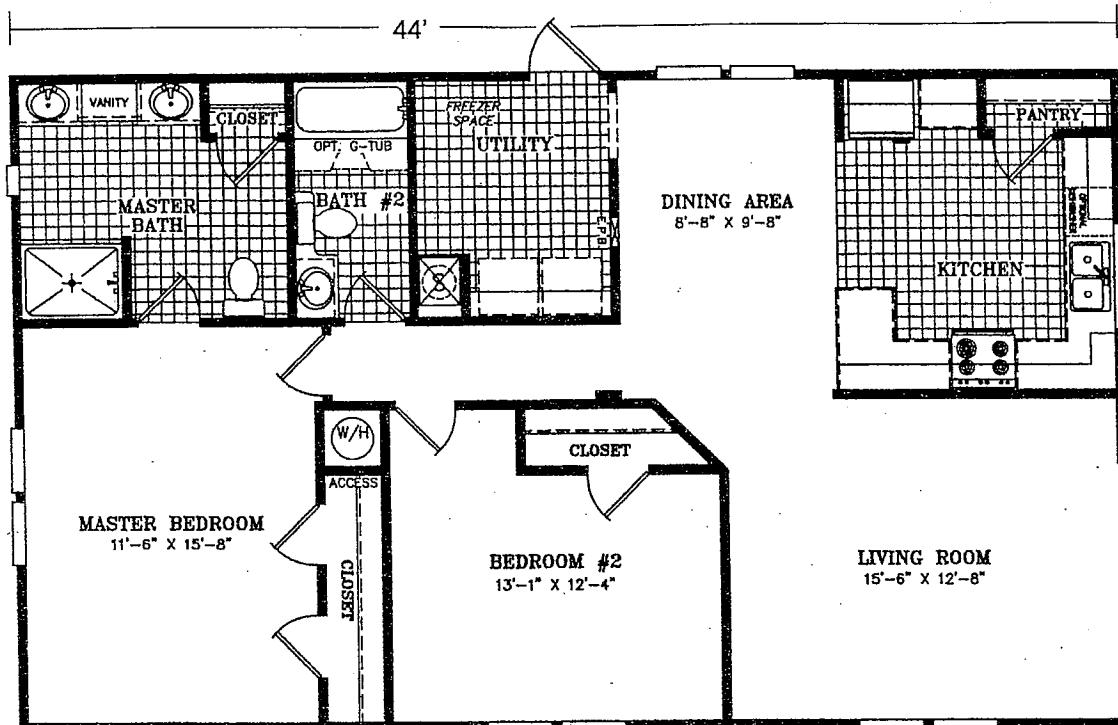
245212-CCL  
 24 x 56  
 2 Bedroom, 2 Bathroom



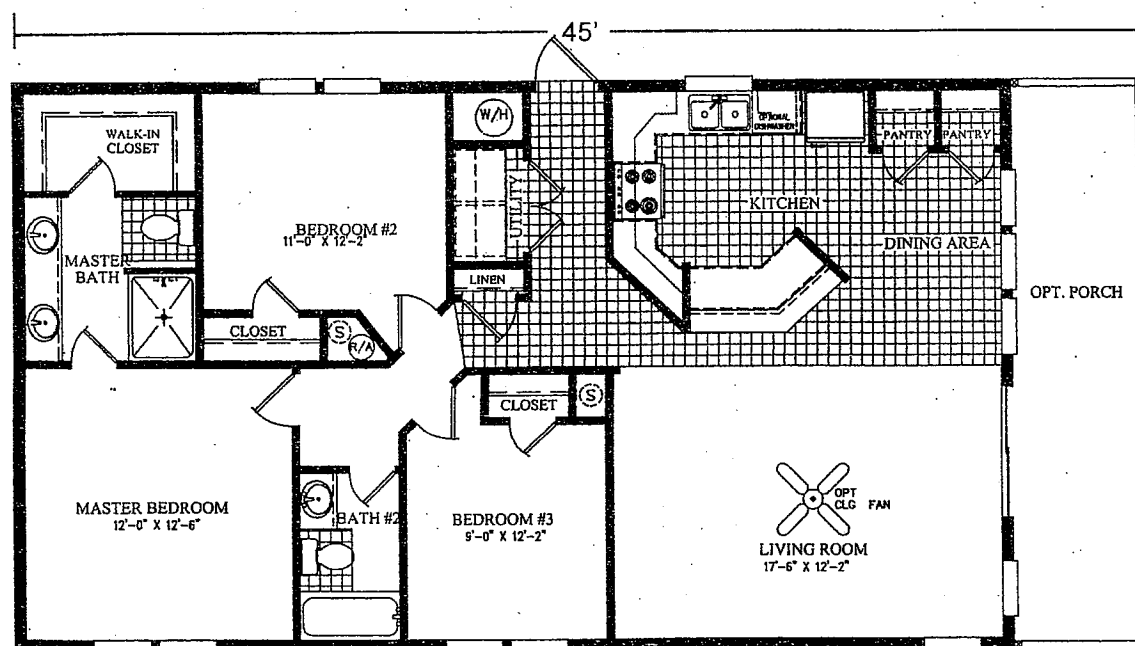
284012-CCL  
 28 x 44  
 2 Bedroom, 2 Bathroom



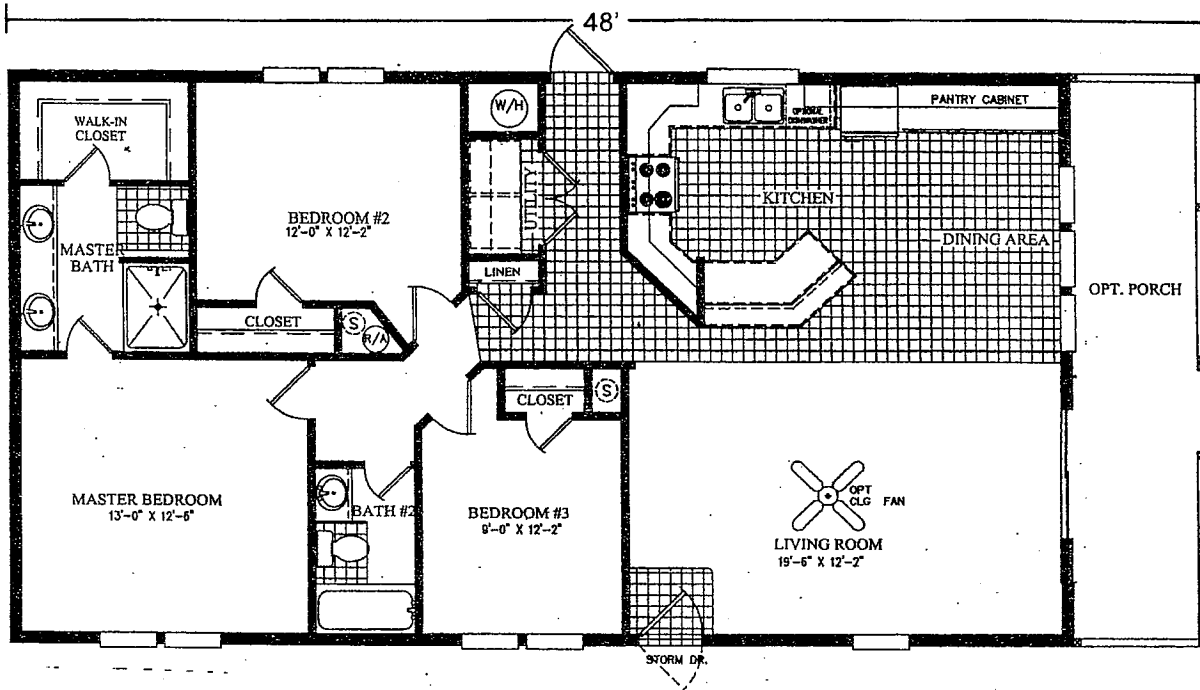
284412-CCL  
 28 x 48  
 2 Bedroom, 2 Bathroom



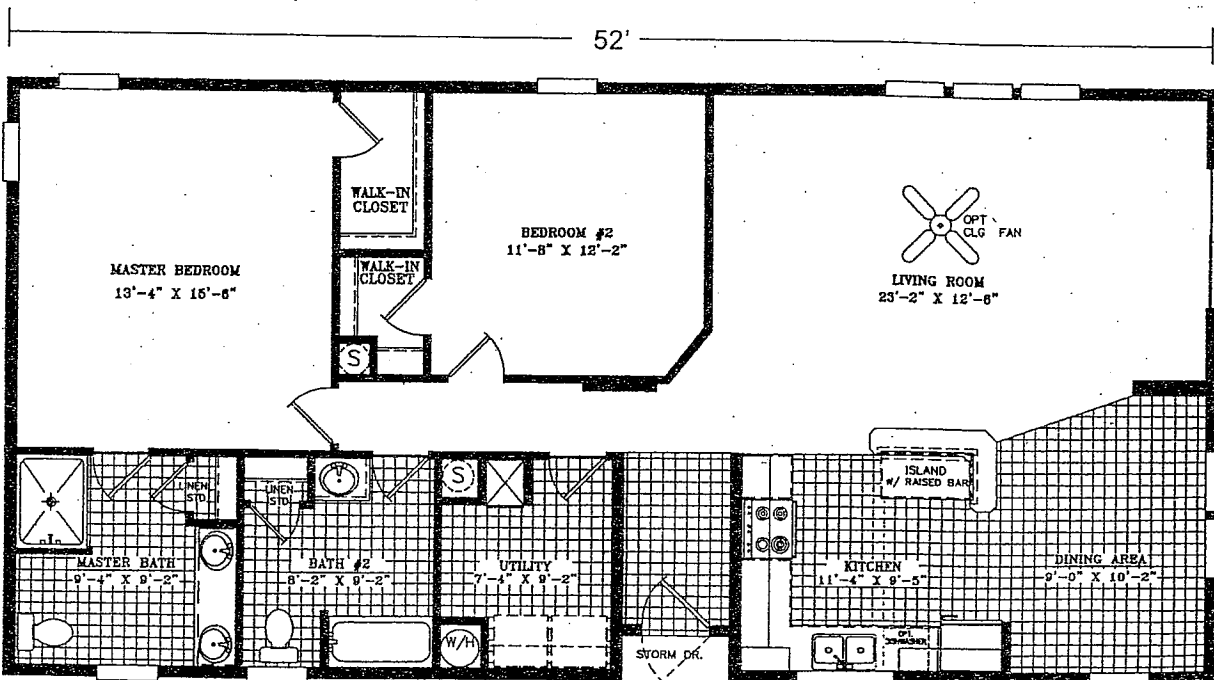
284442-CCL  
 28 x 48  
 2 Bedroom, 2 Bathroom



284513-CCL  
 28 x 49  
 3 Bedroom, 2 Bathroom



284853-CCL  
 28 x 52  
 3 Bedroom, 2 Bathroom



285212-CCL  
 28 x 56  
 2 Bedroom, 2 Bathroom

\*Overall dimensions are nominal and approximate and include overhangs and hitches (approx 4'); square footage calculations are made from overall floor size; ScotBilt Homes reserves the right to change dimensions, colors, specifications, models and prices without notice.